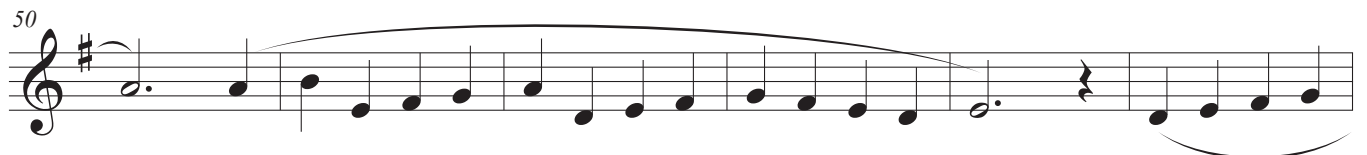
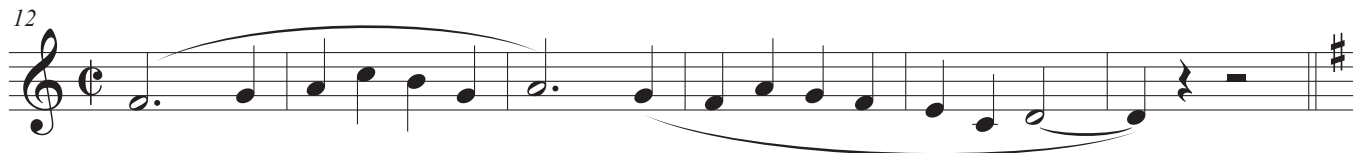
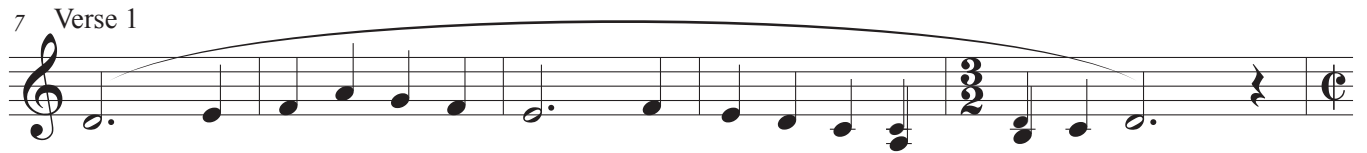


# Now is the Time

Paul Friesen-Carper  
CHRONOS KAIROS



2  
63

# Now is the Time

Verse 3

4

6

Musical staff for Verse 3, measures 63-66. The staff begins with a treble clef and a key signature of one sharp (F#). Measures 63 and 64 contain whole rests. Measure 65 starts with a quarter rest, followed by a 4/4 time signature. Measure 66 contains a whole rest. The staff concludes with a double bar line and a sharp sign.

Refrain

Musical staff for Refrain, measures 76-81. The staff begins with a treble clef and a key signature of one sharp (F#). Measures 76-81 feature a melodic line of eighth notes with a long slur over the entire phrase. The staff ends with a double bar line and a sharp sign.

Musical staff for Refrain, measures 82-88. The staff begins with a treble clef and a key signature of one sharp (F#). Measures 82-88 continue the melodic line of eighth notes with a long slur. The staff ends with a double bar line and a sharp sign.

Musical staff for Refrain, measures 89-93. The staff begins with a treble clef and a key signature of one sharp (F#). Measures 89-93 continue the melodic line of eighth notes with a long slur. The staff ends with a double bar line and a sharp sign.

Verse 4

Musical staff for Verse 4, measures 94-98. The staff begins with a treble clef and a key signature of one sharp (F#). Measures 94-98 feature a melodic line of eighth notes with a long slur. The staff ends with a double bar line and a sharp sign.

Musical staff for Verse 4, measures 99-104. The staff begins with a treble clef and a key signature of one sharp (F#). Measures 99-104 continue the melodic line of eighth notes with a long slur. The staff ends with a double bar line and a sharp sign.

Refrain

Musical staff for Refrain, measures 105-110. The staff begins with a treble clef and a key signature of one sharp (F#). Measures 105-110 feature a melodic line of eighth notes with a long slur. The staff ends with a double bar line and a sharp sign.

Musical staff for Refrain, measures 111-116. The staff begins with a treble clef and a key signature of one sharp (F#). Measures 111-116 continue the melodic line of eighth notes with a long slur. The staff ends with a double bar line and a sharp sign.

Musical staff for Refrain, measures 117-122. The staff begins with a treble clef and a key signature of one sharp (F#). Measures 117-122 continue the melodic line of eighth notes with a long slur. The staff ends with a double bar line and a sharp sign.